

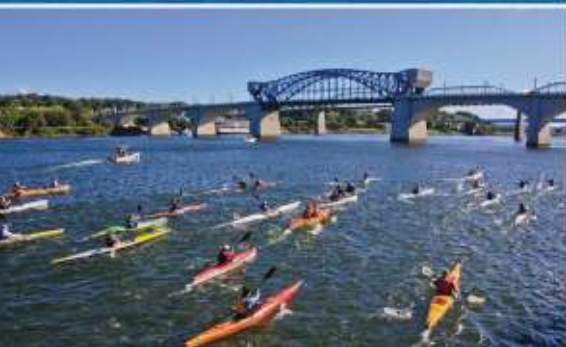


QUALITY. WATER. LIFE.

INVESTING IN WATER QUALITY

OUR COMMITMENT TO YOU

- 💧 The City of Chattanooga is committed to protecting and preserving the water and other natural resources that make our city special.
- 💧 Projects across the City are part of a larger initiative, called a Consent Decree, that will ensure our water quality is world class.



THE CLEAR CHATTANOOGA 3R APPROACH

- 💧 **RESTORE** optimal functionality to the wastewater system.
- 💧 **REPAIR** the system and prevent chronic overflows.
- 💧 **REPLACE** aging infrastructure that is reaching the end of its useful life.

QUALITY. WATER. LIFE.

UNDERSTANDING SANITARY SEWER OVERFLOWS

In a typical year, our wastewater system overflows...

- 💧 more than 150 times,
- 💧 at 53 locations around the city,
- 💧 at manholes and directly into streams and rivers.

These overflows pose a significant public health risk.



Image courtesy of poolevillemd.gov

HOW DOES THE STORMWATER GET IN THE PIPES?

During heavy rains, stormwater enters the wastewater pipes through:

- 💧 Improper drain connections.
- 💧 Damaged or cracked pipes.

QUALITY. WATER. LIFE.

THE SOLUTION

OUR PLAN WILL PREVENT OVERFLOWS BY:

- ◆ MAXIMIZING the use of existing facilities.
- ◆ REHABILITATING pipelines and manholes.
- ◆ INCREASING capacity at the Moccasin Bend Wastewater Treatment Plant.
- ◆ UPGRADING pump stations.
- ◆ CONSTRUCTING equalization stations.

RESTORE



REPAIR



REPLACE

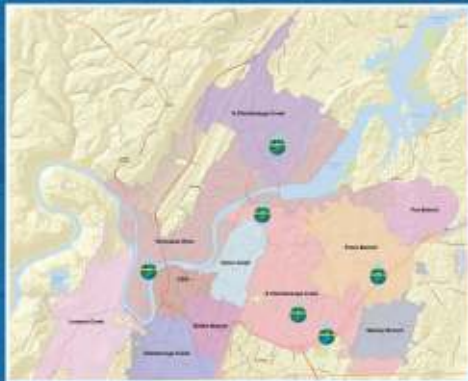


QUALITY. WATER. LIFE.

EQUALIZATION STATIONS

WHAT IS AN EQUALIZATION STATION AND WHY DO WE NEED IT?

- Some of the city's wastewater pipes don't have the capacity to handle all of the wastewater and stormwater during major rain events. This causes the overflows.
- The equalization stations will be built in specific locations and will **temporarily** hold the overflow until the system has the capacity to handle it.
- The stations will be used less than ten times a year. They will hold mostly stormwater.



QUALITY. WATER. LIFE.

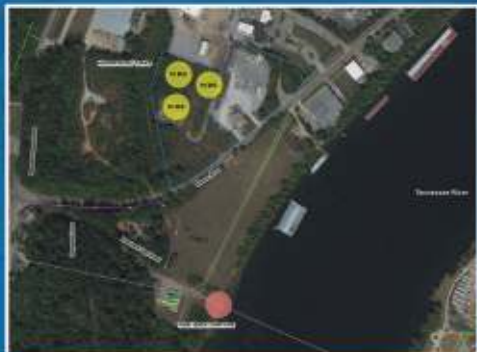
HAMM ROAD EQUALIZATION STATIONS

THE ISSUE

- ◆ The Hamm Road location is a critical junction of a majority of the City's wastewater pipes which can become overwhelmed during heavy rain events.
- ◆ Millions of gallons of wastewater spill into the Tennessee River at the West Bank overflow every year.
- ◆ These incidents can occur up to 10 times per year and can overflow up to 40 million gallons per event.

THE SOLUTION: EQUALIZATION STATIONS

- ◆ Will eliminate the West Bank overflow.
- ◆ Will provide additional capacity to the system.
- ◆ Will improve operations of the Moccasin Bend Wastewater Treatment Plant through flow equalization.
- ◆ Protect the quality of the Tennessee River.





QUALITY. WATER. LIFE.

HAMM ROAD EQUALIZATION STATIONS

EQUALIZATION STATIONS ARE CRUCIAL FOR:

- 💧 PREVENTING overflows.
- 💧 MAINTAINING water quality.
- 💧 IMPROVING public health outcomes.
- 💧 ENSURING our wastewater system has the capacity for current and future needs.

PROJECT FACTS:

- 💧 Phase 1 and Phase 2 Construction starts: **SPRING 2019**
- 💧 Phase 3 Construction starts: **SPRING 2020**
- 💧 Construction timeframe for each equalization station: **18 MONTHS**

